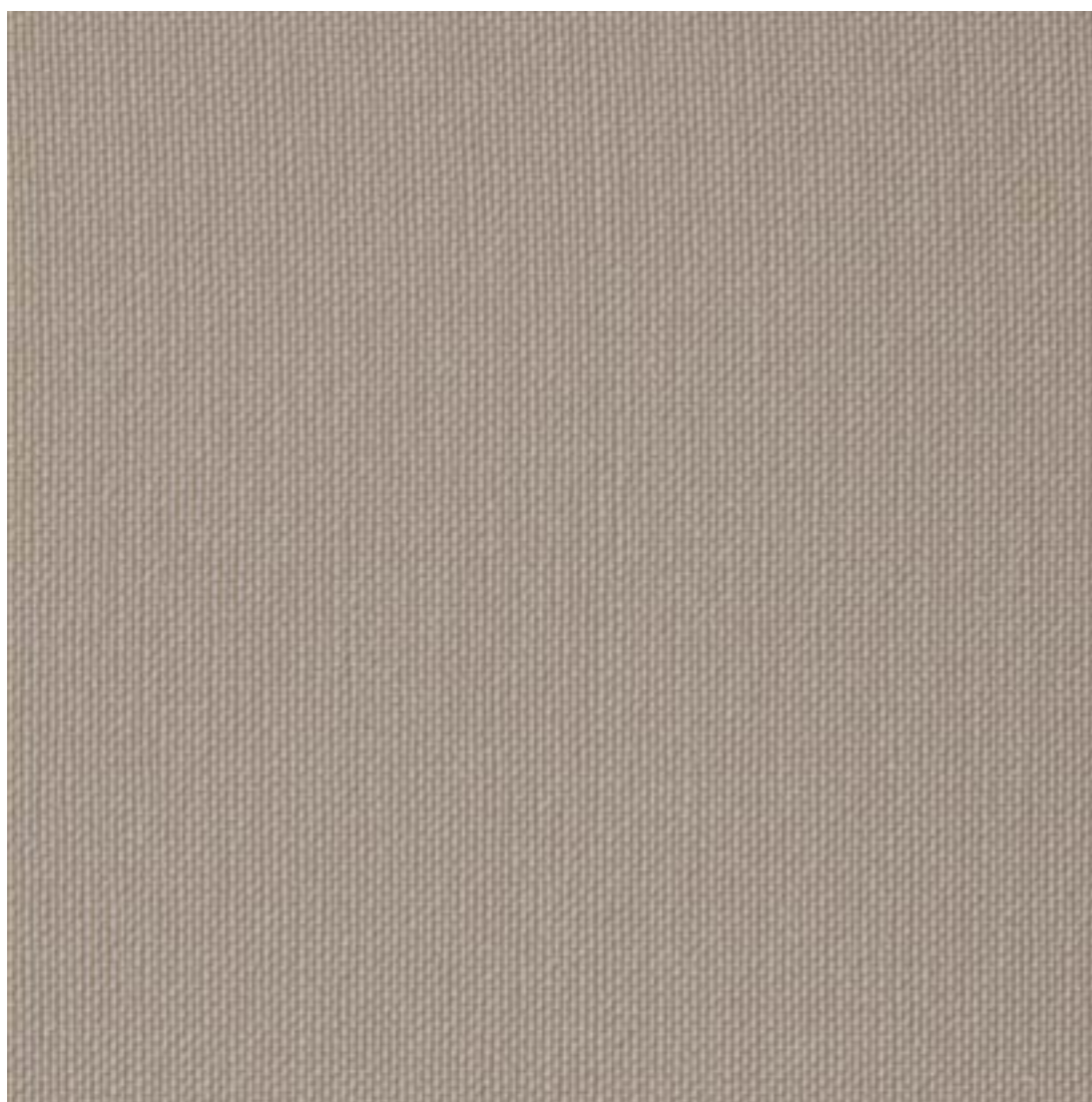


... WITH SPRADLING
it's covered®



is a proven vinyl protective coating that is engineered to create a tough, effective barrier against germs, abrasion and stains.



Exzellente Abriebfestigkeit / Resistencia a la abrasión / Resistance a l'abrasion / Abrasion resistant / Resistenza all'abrasione / Doskonała odporność na ścieranie



Wasserabweisend / Impermeabilidad / Imperméabilité / Impermeability / Impermeabilità / Wodoodporny



Lichtechtheit / Durabilidad del color a la luz / Résistance à la lumière / UV resistant / Resistenza raggi solari / Odporny na promieniowanie UV



Kältebruchresistent / Resistencia a bajas temperaturas / Résistance aux basses températures / Low temp. resistant / Resistenza alla rottura da freddo / Odporny na niskie temperatury



Antimikrobiell ausgerüstet / Resistencia a microorganismos / Protection contre des micro-organismes / Mildew resistant / Antimuffa / Odporny na pleśń



Einfache Reinigung / Fácil limpieza / Facilité d'entretien / Easy to clean / Facile da pulire / Łatwy do czyszczenia



Flammhemmend ausgerüstet / Retardancia al fuego / Retardement au feu / Flame retardant / Ritardanza al fuoco / Produkt uniepalniony



Chemikalienbeständig / Resistencia a químicos* / Résistance aux produits chimiques* / Chemical resistant* / Resistenza chimica* / Odporny na chemikalia**

**Bitte anfragen / Pregunte por asesoría / Sur demande / Upon request / Si prega d'informarsi / na życzenie*

239-0001
MACADAMIA



239-4004
ICE



239-1077
CREAM



239-1051
SISAL



239-1010
BEIGE



239-0002
SANDSTONE



239-0009
TAUPE



239-0005
MOCCA



239-4024
METEOR



239-9002
CARBON



239-2003
COBRE



239-6061
MANDARIN



239-6065
SAFRAN



239-5008
PISTACHO



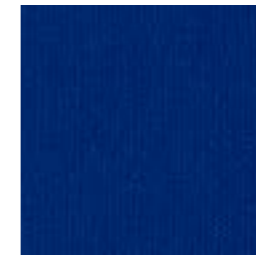
239-5020
BASIL



239-3001
TURQUOISE



239-3066
BALTIC



239-3067
DELFT



239-3007
SAPPHIRE



For Care and Cleaning instructions please visit our website



No Master samples (not suitable for colour matching and quality control / testing purposes).

Commercially acceptable colour shifts may occur between production runs. As such lot separation is recommended.

All SPRADLING® products and services are offered and sold subject to the SPRADLING® General Terms and Conditions of Sale, available for download under www.spradling.eu. Please follow our manufacturing and maintenance guidelines, also available under www.spradling.eu. In the event of failure to comply with these guidelines, no liability is assumed by the manufacturer and any warranty claim(s) (if applicable) expire.



HOSPITALITY



OFFICE



HEALTH CARE



PUBLIC SPACES



RESIDENTIAL



239-6004
RUBIN



239-2011
RED



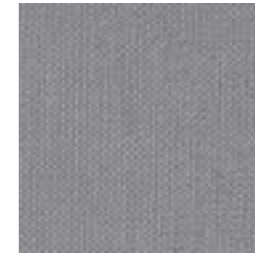
239-7002
MAGENTA



239-7001
AUBERGINE



239-4002
STORM



239-4001
PLATA



For Care and Cleaning instructions please visit our website



No Master samples (not suitable for colour matching and quality control / testing purposes).

Commercially acceptable colour shifts may occur between production runs. As such lot separation is recommended.

All SPRADLING® products and services are offered and sold subject to the SPRADLING® General Terms and Conditions of Sale, available for download under www.spradling.eu. Please follow our manufacturing and maintenance guidelines, also available under www.spradling.eu. In the event of failure to comply with these guidelines, no liability is assumed by the manufacturer and any warranty claim(s) (if applicable) expire.



HOSPITALITY



OFFICE



HEALTH CARE



PUBLIC SPACES



RESIDENTIAL

COATED FABRICS